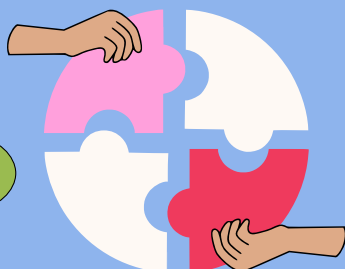


CO-PRODUCTION

WHAT IS IT?

Co-production unites the Link Team with young people and families to enhance services together

It is all about equal partnership!



YOUR ROLE


Work closely with other parents, carers, young people & experts by experience.

Review progress/changes monthly and assess the impact of those changes.

Share your experiences and ideas to help shape the future of the Link Team.

INTERESTED?

CONTACT US

 **Mubara Sana**
Mubara.sana@oxfordhealth.nhs.uk

 **Sophie Pomroy**
Sophie.Pomroy@oxfordhealth.nhs.uk

Join the Conversation,
Be Part of the Change!

OPEN TO PARENTS/CARERS AND
YOUNG PEOPLE FROM OXFORDSHIRE,
BUCKINGHAMSHIRE & BERKSHIRE.

RESERVE LIST

This is a voluntary role, and we understand life can change. If all positions are filled, we'll maintain a reserve list of interested parents/carers and young people to step in if needed.



THAMES VALLEY LINK PROGRAMME

CO-PRODUCTION

Call for Family Members,
Young People &
Experts By Experience!

JOIN NOW



ABOUT THE LINK TEAM

WHO ARE WE?

As part of CAMHS (Child and Adolescent Mental Health Service), we work with Oxford Health NHS Trust, Berkshire Health NHS Trust, and RAW Potential.

WHAT DO WE DO?

We support children and young people in complex situations.

WHERE ARE WE BASED?

Oxfordshire, Berkshire and Buckinghamshire.

Our aim is to ensure that the services we provide meet the real needs of those we support.

GET THE FACTS!

We want to hear from families and young people who have had direct contact with the Link Team and are passionate about creating real, positive change.

START HERE

Let's answer some of your questions...



STRONGER TOGETHER



TIME AND FLEXIBILITY

1-2 hours once a month, with occasional tasks or discussions in between. We understand everyone has busy lives, so your level of participation can be flexible around your other commitments.



DIVERSITY & INCLUSION

We welcome people from all walks of life to join us, because every voice matters and together we can create meaningful change for the children and young people we support.

ASK ME

AVAILABLE SUPPORT

We're committed to making participation easy for everyone, so if you need support with travel, childcare, or online access, just let us know!

SAFEGUARDING AND CONFIDENTIALITY

Your safety and comfort are our top priorities, and we'll ensure everyone feels fully supported with safeguarding briefings, so together we create a safe, respectful, and trusting space for all.

YOUR VOICE IN ACTION

Your input will help shape our collective decisions in the Link Team, and we'll share regular updates so you can see how, together, we're making a meaningful difference for young people, families, and our staff.

THANK YOU!

We're grateful for your contributions as a volunteer and will celebrate your commitment with certificates and opportunities for training and personal development to make your experience rewarding!

"Together, we transform challenges into opportunities"

